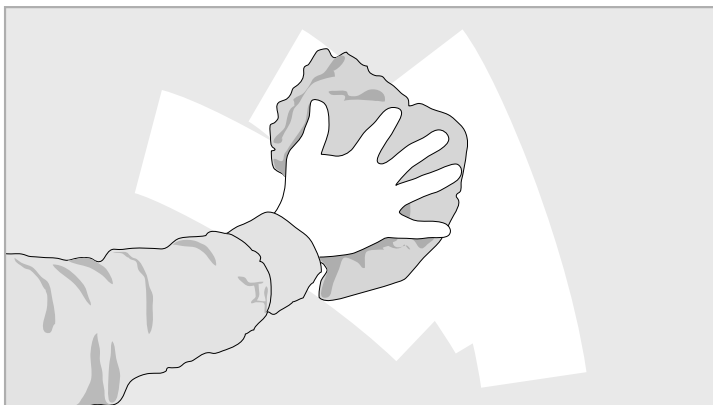


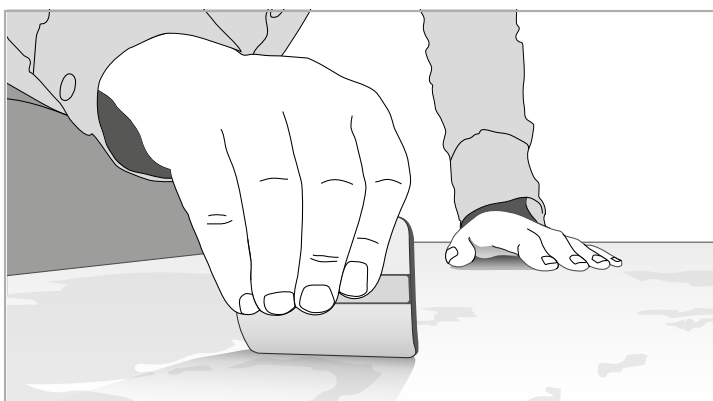
Please note: If you have recently painted your wall you will have to wait 4-6 weeks for the paint to fully cure.



Step 1: Surface prep

To start, give your wall a good clean and wipe down with a clean cloth to ensure no dirt, dust or grease remains. You may also need to sand back any imperfections on the wall, as uneven surfaces will show. Ensure wall is dry, before continuing.

You will need: Tape measure, spirit level, masking tape, pencil, step ladder, and scalpel/Stanley knife or scissors.



Step 2: Graphic prep

Using a Squeegee press the decal all over using strokes in one direction. This ensures the vinyl is fully adhered to the top application paper.



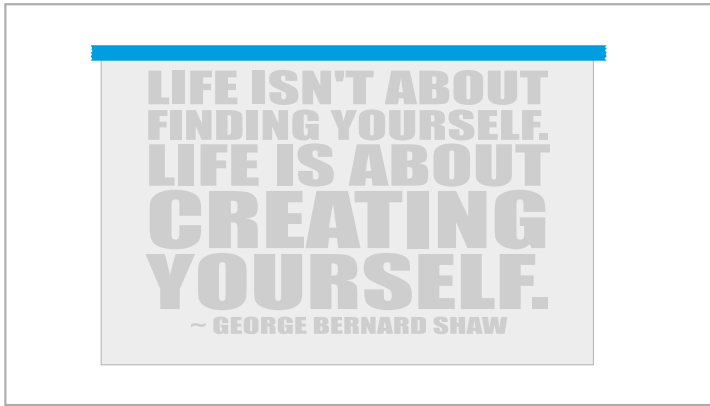
Step 3: The dummy run

Before removing any layer, tape the sticker to the wall using two small pieces of masking tape at the top. Then, take a big step back and have a good look to ensure that you are happy with the sticker's placement including its height and how level it is. If you are unhappy simply untape the sticker and make any adjustments.



Please note: If you have recently painted your wall you will have to wait 4-6 weeks for the paint to fully cure.

Option A: Horizontal Hinge



Step 4A: Select your hinge!

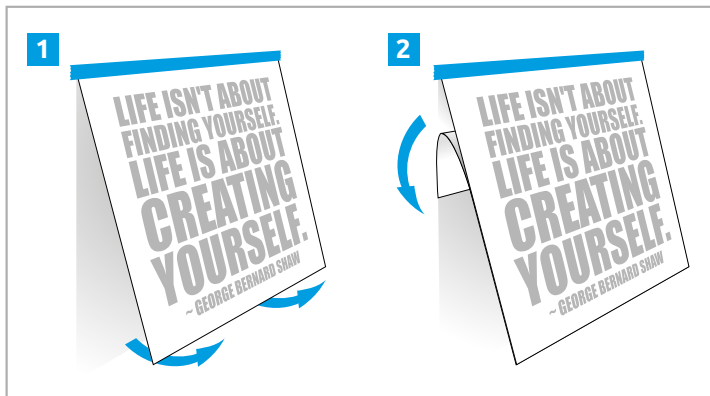
Option A: The horizontal hinge

If you are installing a simple small graphic that is about a metre or less, this is the method for you.

Whilst your graphic is still on the wall from 'the dummy run', take a long strip of masking tape and apply it to the top edge of the sticker and the wall to create a hinge.



MASKING TAPE STEP LADDER



Step 5A: Peel

From here, fold (1) the graphic above itself and start to peel the backing paper away (2) at the hinged edge. Once you have revealed approximately 10-20cm, lay the graphic back down keeping the sticker under tension.



STEP LADDER



Step 6A: Sticking the graphic

With one hand hold the graphic at an angle to the wall, with your other hand, use your squeegee to apply pressure from the hinge down working from the centre out.

Once that 10-20cm is stuck, reveal the next section and repeat until the whole graphic is adhered to the wall. Remember to keep the graphic under tension at all times.



SQUEEGEE STEP LADDER